



SANME



ZK 系列 直线振动筛

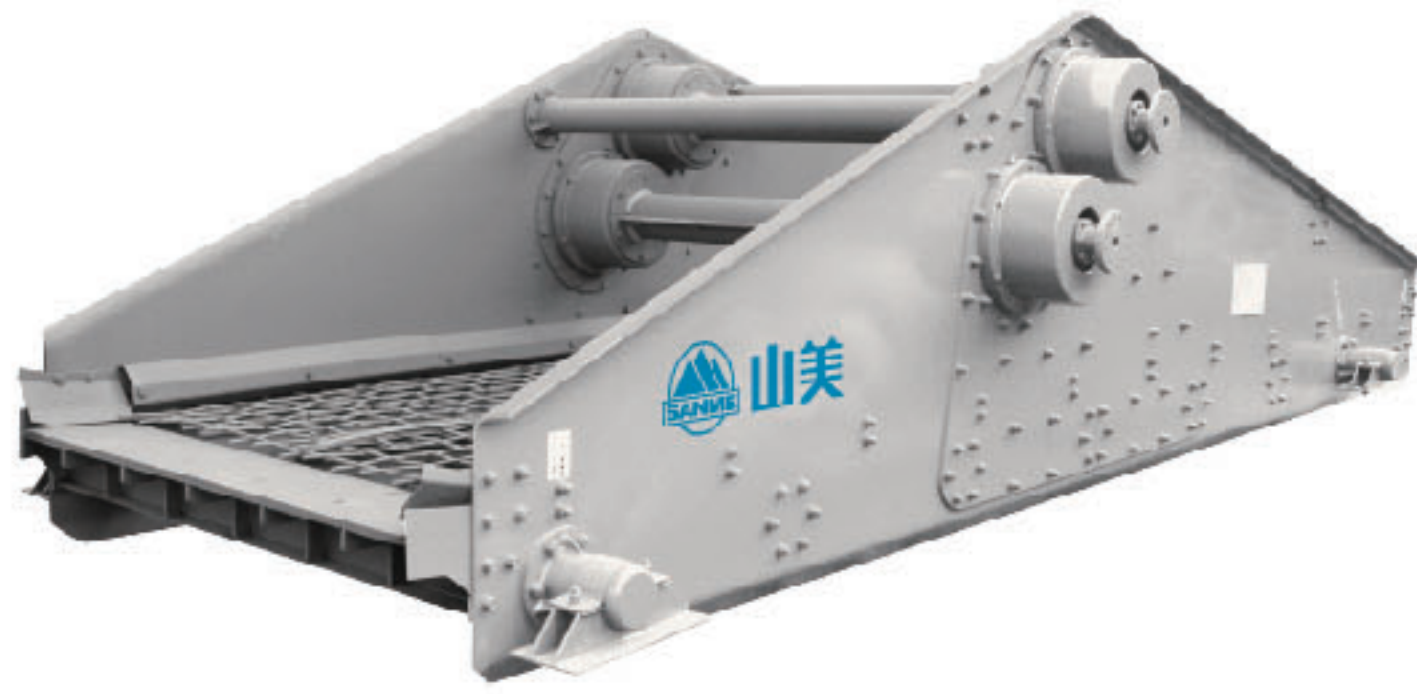
ZK Series Linear Vibrating Screen



上海山美环保装备股份有限公司
SHANGHAI SANME MINING MACHINERY CORP., LTD.
(中德合资控股)
(Sino-German JV Holding)

ZK系列直线振动筛

ZK Series Linear Vibrating Screen



ZK系列直线振动筛是吸收了德国技术制造的高效振动筛，广泛应用于煤炭、冶金、电力、建材、轻工等行业，对中、细粒级物料进行干、湿式分级或脱水、脱泥、脱介等。

ZK series linear vibrating screen absorbs German technology. With the advanced technology and unique eccentric structure. It is used in coal, metallurgy, electric power, building materials etc. and suitable for dewater, demud, demedium as well as dry and wet classification to medium and fine materials.

技术参数 Technical Data

型号 Model	筛面 Screen Surface			给料粒度 Max Feeding Size(mm)	处理能力 Capacity (t/h)	电机功率 Motor Power (kw)	重量 Weight (kg)
	面积 Deck Size(m ²)	筛孔尺寸 Mesh(mm)	筛网结构 Structure				
ZK1022	2.25	0.25-50	编织、条缝、冲压、 橡胶、聚氨酯筛网 woven, striped, punched, rubber, polyurethane (PU)	<250	4.5-90	3×2	2215
ZK1230	3.6	0.25-50		<250	7.2-144	4×2	2693
ZK1237	4.5	0.25-50		<250	9.0-180	5.5×2	3118
ZK1437	5.25	0.25-50		<250	12.0-250	5.5×2	3210
ZK1445	6.3	0.25-50		<250	12.6-252	7.5×2	4040
ZK1637	6	0.25-50		<250	12.0-240	5.5×2	3552
ZK1645	7.32	0.25-50		<250	14.4-280	7.5×2	4572
ZK1837	6.75	0.25-50		<250	14.4-270	11×2	4995
ZK1845	8.1	0.25-50		<250	16.2-324	11×2	5436
ZK1852	9.45	0.25-50		<250	18.9-378	11×2	5900
ZK2045	9	0.25-50		<250	16.2-324	11×2	5969
ZK2052	10.5	0.25-50		<250	21.0-420	11×2	6472
ZK2060	12	0.25-50		<250	24.0-480	15×2	7558
ZK2445	10.8	0.25-50		<250	21.6-432	15×2	7439
ZK2452	12.6	0.25-50		<250	25.2-504	15×2	8216
ZK2460	14.4	0.25-50		<250	28.8-576	15×2	9235
ZK3045	13.5	0.25-50		<250	27.0-540	15×2	9859
ZK3052	15.75	0.25-50		<250	31.4-628	22×2	9958
ZK3060	18	0.25-50		<250	17.5-525	22×2	11062
ZK3645	16.2	0.25-50		<250	37.8-756	22×2	12289
ZK3652	18.9	0.25-50		<250	43.2-846	22×2	13409
ZK3660	21.6	0.25-50		<250	43.2-846	22×2	14390
ZK3675	27	0.25-50		<250	54.0-1080	30×2	17100
2ZK1022	2.25	0.25-50		<250	4.5-90	4×2	3018
2ZK1230	3.6	0.25-50		<250	7.2-144	5.5×2	3740
2ZK1237	4.5	0.25-50		<250	9.0-180	7.5×2	4460
2ZK1437	5.25	0.25-50		<250	12.0-250	7.5×2	5042
2ZK1445	6.3	0.25-50		<250	12.6-252	15×2	6883
2ZK1637	6	0.25-50		<250	12.0-240	15×2	6919
2ZK1645	7.32	0.25-50		<250	14.4-280	15×2	8654
2ZK1837	6.75	0.25-50		<250	14.4-270	15×2	7951
2ZK1845	8.1	0.25-50		<250	16.2-324	15×2	8116
2ZK1852	9.45	0.25-50		<250	18.9-378	15×2	9061
2ZK2045	9	0.25-50		<250	16.2-324	15×2	9133
2ZK2052	10.5	0.25-50		<250	21.0-420	22×2	10128
2ZK2060	12	0.25-50		<250	24.0-480	22×2	10875
2ZK2445	10.8	0.25-50	<250	21.6-432	22×2	11008	
2ZK2452	12.6	0.25-50	<250	25.2-504	22×2	12757	
2ZK2460	14.4	0.25-50	<250	28.8-576	22×2	13560	
2ZK3045	13.5	0.25-50	<250	27.0-540	30×2	15472	
2ZK3052	15.75	0.25-50	<250	31.4-628	37×2	16942	
2ZK3060	18	0.25-50	<250	17.5-525	37×2	18253	
2ZK3645	16.2	0.25-50	<250	37.8-756	45×2	21042	
2ZK3652	18.9	0.25-50	<250	43.2-846	45×2	24040	
2ZK3660	21.6	0.25-50	<250	43.2-846	45×2	25400	



上海山美环保装备股份有限公司
SHANGHAI SANME MINING MACHINERY CORP., LTD.
(中德合资控股)
(Sino-German JV Holding)



山美股份官方微信

版权所有 翻印必究 中国印制 Printed in China
SANME-16C | ZK | 2020-09 | 5000

地址：上海市奉贤区青村镇奉村路 258 号
邮编：201414
电话：021-5759 1166 5759 1188
传真：021-5756 6188 5820 0089
网址：www.shsmzj.com
电邮：info@sanmecorp.com

Add: No.258, Fengcun Road, Qingcun County, Fengxian District,
Shanghai 201414, China
Tel: +86-21-5712 1166 5759 1188
Fax: +86-21-5756 6188 5820 0089
Website: www.sanmecrusher.com
E-mail: sales@sanmecorp.com

免费热线：400-921-5566
售后专线：021-5712 7766

Free Hotline: 400-921-5566
Service Center: +86-21-5712 7766

- 我们的产品在不断的更新和改进中，我们保留在未事先告知用户的情况下，更改参数及设计的权力。
Our products are constantly updated and improved, we reserve the right to change parameters and design without advance notification of customers.
- 照片中产品外观颜色与实际机型存在差异，颜色标准以实物为准。
If there are any discrepancy and difference between color of product appearance and actual machine type in the picture, color standard is subject to actual object.
- 本手册中的配置不一定是出厂标准配置，购买时请详细咨询我们。
Specifications and design in the brochures are not always the standard. Please consult us particularly when purchasing.